



# SOUTH GEORGIA

SPECIAL IN-DEPTH EXPEDITION 2026

**SEP 26 - OCT 12, 2026**

17 DAYS, 16 NIGHTS

**TOP END EXPEDITION**

SMALL SHIP - UP TO 90 PEOPLE

**IN-DEPTH EXCLUSIVE**

SEE MORE THAN ANYONE ELSE

**TOP AMENITIES**

NEW SHIP WITH TOP LEVEL CABINS

**BEST TIME = SPRINGTIME!**



**FULL LUXURY CHARTERED SHIP EXCLUSIVELY FOR OUR GUESTS**

GUIDED BY AWARD WINNING TEAM AND HEADED BY ROIE GALITZ AND SPECIAL GUESTS



**SPECIAL EARLY BIRD PRICE**

STARTING FROM \$13900

OUR AMAZING SHIP  
**MAGELLAN EXPLORER**





# WHAT IS SPECIAL ABOUT OUR EXPEDITION?

This expedition cruise is a world-unique opportunity to get where so few have visited, in a way that even fewer have been fortunate to do so.

## What is so special about this expedition?

- ✓ **We Own the Experience** - Since we've chartered the entire ship, we've upgraded the trip and control the schedule.
- ✓ **Peak of the Calving Season** - Elephant Seals are being born in front of us every day
- ✓ **Early Spring** - Snow covered landscapes, the most beautiful time of South Georgia
- ✓ **King Penguins** - huge colonies up to 500,000, growing small chicks and incubating eggs
- ✓ **Fur Seals** - are still in small numbers, allowing us access to all the best locations.
- ✓ **Best Light** - Earlier in the season we have the latest sunrises and best light throughout the day
- ✓ **Punta Arenas Departure** - Eliminating the threat of the risky and pricey flights to the Falklands
- ✓ **Longer Duration** - 17 days total, so we added 2 days to cover the extra distance - with important content
- ✓ **Best Ship Available** - The Magellan Explorer is brand new (2019) with the best tech, eco-friendly and comfort
- ✓ **Only 90 Guests** - All landings are limited to 100 max, so we can be all on shore for more time without stress
- ✓ **Expanded Itinerary** - We have added more time on the best landings and greater access than others
- ✓ **Enhanced Flexibility** - Earlier, with fewer ships around, we can adjust according to weather and beach conditions.
- ✓ **More Guidance** - 16 Expert guides for your enriched content on wildlife, photography, nature and history. 1:5.5 ratio.



# WHAT ANIMALS DO WE SEE ON OUR EXPEDITION?

\*All the photos have been taken during our expeditions by Roie Galitz

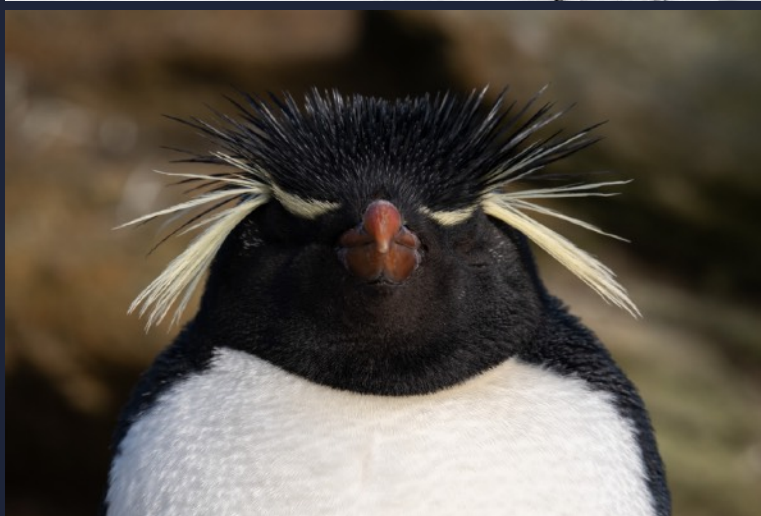
## Gentoo Penguin

Gentoo is the largest of all *Pygoscelis* penguins. It can be easily recognized by the wide white stripe extending like a bonnet across the top of its head and the red bill. Chicks have grey backs with white fronts. They are the fastest underwater swimming penguins, reaching speeds of 36 km/h. They feed mainly on krill, but also on fish and squid. They are the most numerous penguins nesting in the Antarctic region.



## Rockhoppers

Rockhopper penguins are small, energetic penguins known for their distinctive yellow and black crest feathers and red eyes. They inhabit rocky coastlines in the southern oceans, using their strong legs to "hop" between rocks, showcasing remarkable agility and resilience.



## King Penguin

King penguins thrive on South Georgia Island, forming one of the largest and most vibrant colonies in the world. Known for their striking orange and yellow neck markings, they gather by the thousands on beaches to breed and molt. The island's nutrient-rich waters provide abundant food, supporting these penguins' lengthy rearing periods, which can span over a year per chick.

## Black-Browed Albatross

The black-browed albatross is one of the smaller black and white 'mollymawks' with a pale head. This albatross can be identified at a distance by its underwing pattern featuring a wide dark leading edge. At close range, the adult birds have a yellow eye that makes identification easy.



# WHAT ANIMALS DO WE SEE ON OUR EXPEDITION?

\*All the photos have been taken during our expeditions by Roie Galitz

## Giant Petrels

Giant petrels are large seabirds found in the Southern Ocean, known for their robust build and impressive wingspan, reaching over 2 meters. Scavengers by nature, they often feed on carrion and are key players in their ecosystem. With sharp hooked beaks, they dominate coastal areas, showcasing remarkable adaptability and resilience.



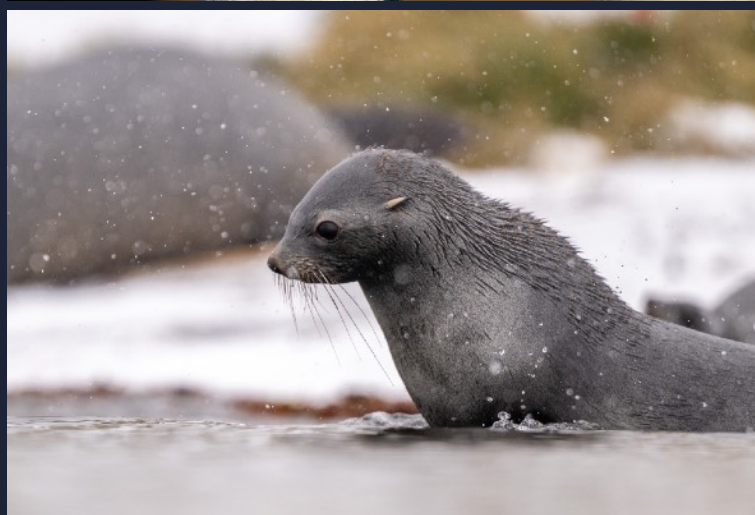
## Elephant Seal

The southern elephant seal is the world's largest seal, with a long body, small flippers, and dark eyes. Males grow up to 6.5 meters and 3,700 kg, with large heads and a noticeable proboscis. Females are smaller, growing to 4 meters and 800 kg.



## Imperial Shags

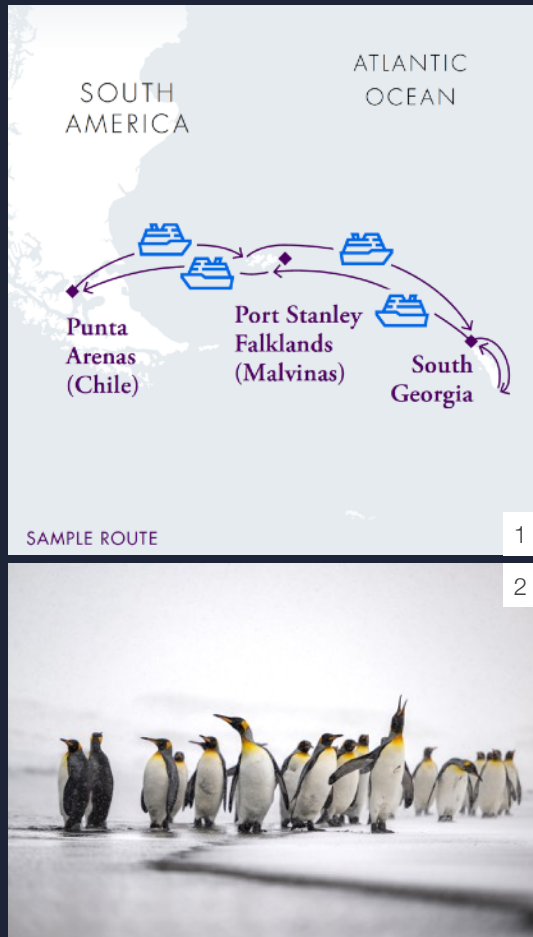
Imperial shags, also known as blue-eyed shags, are striking seabirds found in subantarctic regions, recognized for their vibrant blue eyes and glossy black and white plumage. They are excellent divers, feeding primarily on fish and crustaceans. Nesting in colonies, these shags build sturdy nests on cliffs and rocky coastlines.



## Fur Seal

Fur seals, including Antarctic and Subantarctic species, are vital to South Georgia's biodiversity. Each summer, thousands gather on the island's rocky shores to breed, forming bustling colonies. Their thick fur and large eyes make them charismatic, while they excel as marine predators, sustaining South Georgia's rich ecosystem.

# OUR ITINERARY



1. Our Voyage Plan
2. King Penguins in South Georgia

## Day 1 / Punta Arenas, embarkation

From 9:00 hrs., make your way to Explorers House in Punta Arenas and enjoy the facilities. At 16:00 hrs., a group transfer will take you to the port for embarkation. As we sail along the Strait of Magellan, our Expedition Team will introduce the history of this fabled sea route.

## Day 2 / On our way to the Falklands

Enjoy the ship's hospitality as we make our way to the Falklands (Malvinas). Our engaging series of lectures and presentations begin

## Day 3 / Saunders Island, Carcass Island

During a morning visit to Saunders Island, we enjoy the long white-sand beach. A wilderness experience, the main attractions there are rockhopper penguins, nesting black browed albatross, and sub-Antarctic gentoo penguins. In the afternoon, we visit Carcass Island. There is an option for an easy hike to the settlement, bird watching, and a typical tea experience.

## Day 4 / Port Stanley

Join our expedition team on guided walking tours of Port Stanley or Gipsy Cove. Or explore on your own and absorb the atmosphere, grabbing lunch at the local pub, visiting the maritime museum, the church, hunting for souvenirs, or walking down Ross Road, paying tribute at the war memorials at the waterfront.

## Day 5-6 / At Sea

As we sail toward South Georgia, attend an engaging program of lectures and presentations. In the company of expert guides, watch for wildlife from the lounge or from the outside decks. You may spot magnificent seabirds, such as albatrosses and petrels, as well as different species of whales.

## Day 7 / Elsehul Bay

Depending on sea conditions over the previous days, arrival is planned for the afternoon. Provided we receive approval from the South Georgia government, we plan to do an evening Zodiac cruise at Elsehul Bay.

## Day 8 / Grytviken, Fortuna Bay

Our first landing is at Grytviken. We clear Customs and then visit the historical site, with the museum and Ernest Shackleton's grave. In the afternoon, we land at Fortuna Bay / Stromness to see king penguins. Here we learn more about Shackleton and his expedition. There is also an optional 2-3 hour "Shackleton walk".

## Day 9 / Gold Harbor, Cooper Bay

In the morning, we plan a landing at Gold Harbor. This is a spectacular location with king penguins, elephant seals and hanging glaciers. There are also sooty albatrosses here. In the afternoon, we visit Cooper Bay to see macaroni penguins during a Zodiac cruise.

## Day 10 / St Andrews Bay, Ocean Harbor

St Andrews Bay is the destination of our morning excursion. We see the largest king penguin colony, and elephant seal bulls. In the afternoon, we plan a Zodiac cruise and landing at Ocean Harbor. The highlights here are a shipwreck and remains of the whaling industry.

## Day 11 / Prion Island, Salisbury Plain

In the morning, we plan to visit Prion Island to see the nesting wandering albatross. In the afternoon, we head to Salisbury Plain for more king penguins and stunning landscapes.

## Day 12-14 / At Sea

As we make our way back to the Falkland Islands our program presentations continues. Photo reviews and editing workshops for those who wish to learn more.

## Day 15 / Bleaker Island

Evening landing at Bleaker Island, a natural reserve with a famous bird area featuring a large variety of birds.

## Day 16 / At sea

Crossing through Straits of Magellan.

## Day 17 / Punta Arenas

Upon arrival at Punta Arenas, we disembark and take a group transfer to the town center, where the expedition will end. Explorers House remains available to you for the day.

# A FEW MOMENTS FROM OUR 2024 EXPEDITIONS



# SUNRISE AT SOUTH GEORGIA



# SUNRISE AT SOUTH GEORGIA



# OUR EXPERT GUIDES



## Roie Galitz

CEO of Phototeva, Pro Wildlife Photographer Expert Guide

For the past 18 years, Roie is exploring and documenting our planet's wildlife. His photographs get great exposure worldwide, millions of views and frequent appearances in the media (BBC, National Geographic and others). His images were presented in local and international exhibitions, featured in exclusive magazines and honored with over 140 international awards over the years. His main attraction is the high Arctic and the Polar Bears with dozens of expedition he guided there.

As an environmental diplomat, and a Greenpeace Ambassador, Roie has given 3 TED talks, spoke at the United Nations HQ, NY Climate Week and conventions all over the world. He is also a board member and on the advisory board for several environmental NGOs and a member of the Explorers Club.

Ambassador for leading brands, including: Nikon, Sandisk Professional, Gitzo and Lowepro.

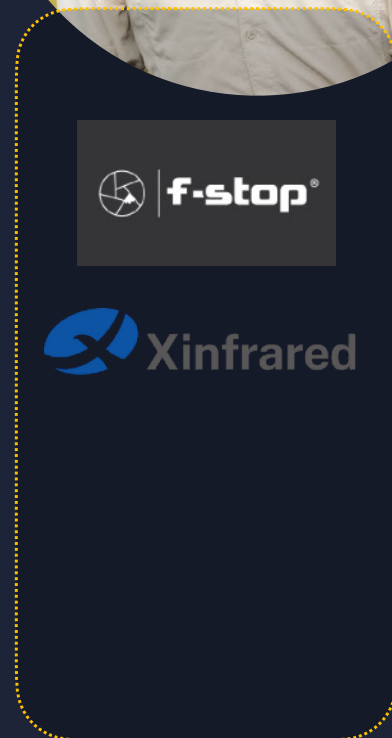
## Yarin Klein

Pro Wildlife Photographer and Expert Guide

As a wildlife photographer dedicated to telling stories of fragile nature, Yarin has been traveling the world and creating breathtaking images of rarely seen animals. With dozens of expeditions he guided to the furthest corners of the Earth, Yarin's images have captivated the hearts of millions of people.

Yarin has been guiding photography and expeditions for the past 11 years, and his passion is divided between the Savannas of Africa and the sea ice of the high Arctic.

Ambassador for leading brands, including: F-stop, Xinfrared



# SOUTH GEORGIA IN-DEPTH - OCTOBER 2026

SEPTEMBER 26 - OCTOBER 12 2026 - 17 DAYS, 16 NIGHTS



## Pricing Per Person \*Limited Availability

Category	Size	Details	Cost
Single Cabins	210 ft2 19 m2	Cabin with sitting area and balcony	\$23,995
Penthouse Suites	360 ft2 33 m2	Suite with sitting room, balcony and bedroom area	\$18,995
Deluxe Veranda Cabins	240 ft2 22 m2	Cabin with sitting area and balcony	\$16,895
Veranda Cabins	210 ft2 19 m2	Cabin with sitting area and balcony	\$15,795
Porthole Cabins	200 ft2 18 m2	Cabin with sitting area and porthole	\$13,795
Triple Suites	480 ft2 44 m2	Suite with two bedrooms, balcony, and sitting area	\$16,995

\* Prices are subject to change without notice, final price in the signup forms are the correct ones

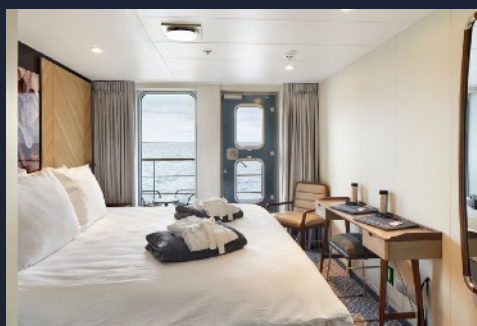
## Cabin Types



Penthouse Suite



Deluxe Veranda



Veranda Cabin

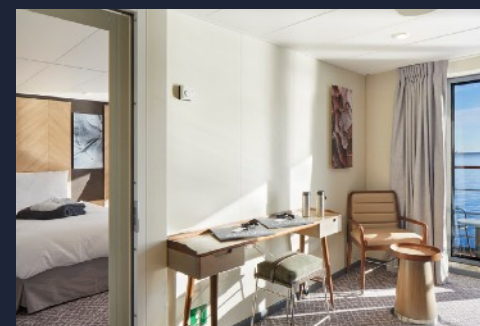
## Cabin Types



The Veranda

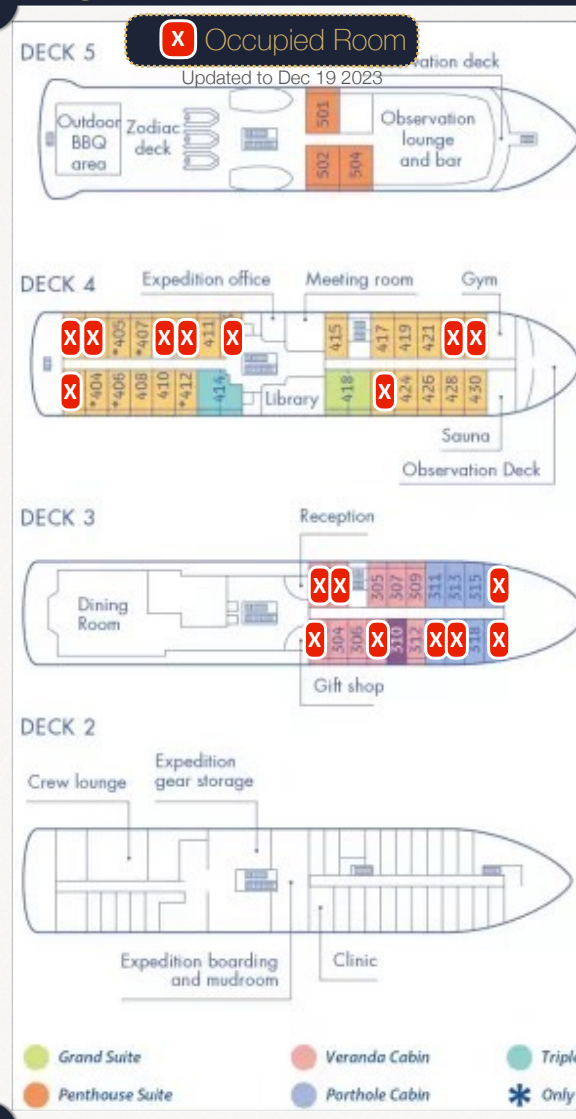


Porthole Cabin



Grand Suite

## Magellan Explorer Deck Plan



## Specification of the Magellan Explorer

Passengers	90 humans
Staff & Crew	60 humans
Length	91 meters
Breadth	16.2 meters
Draft	4.3 meter
Gross Tonnage	4900 gt
Propulsion	3,440kW Diesel Engines
Ice Class	LR PC6
Cruising Speed	13 knots



## PRICING & DETAILS

### EXPLORER'S ELITE SOUTH GEORGIA AND FALKLAND EXPEDITION OCTOBER 2026

#### WHAT'S INCLUDED?

1. Special expedition for nature lovers and photographers.
2. Photography guidance by elite photographers
3. In-depth exclusive itinerary for South Georgia and the Falklands
4. 17 days and 16 nights full board service.
5. Ship expedition cruise onboard the Magellan Explorer.
6. Daily buffet breakfast and lunch onboard ship, wide choice of dishes.
7. Daily served dinner onboard ship, a choice of 3 main courses.
8. Coffee, tea, cappuccino, snacks onboard ship throughout cruise.

9. All guided shore excursions, lectures and entertainment onboard.
10. Loan of waterproof boots for shore landings
11. IAATO passengers fees for Antarctic alliance
12. All boat expenses (Fuel, Insurance, Docking fees etc.)
13. Preparation meeting and post trip meeting online.

#### NOT INCLUDED

1. International travel to-from Punta Arenas
2. Boutique and bar consumptions
3. Phone, internet, e-mails
4. Insurance which you must have
5. Gratuity for ship's crew
6. Visas, if required.
7. All items not described in "included in the above charter rates"



For info and advice - [info@explorerselite.com](mailto:info@explorerselite.com)

# SOUTH GEORGIA IN-DEPTH - OCTOBER 2026



## Questions and Answers

**Q - Is this a luxury or comfort expedition?**

A - This expedition is based on a brand new expedition ship which includes amazing cabins and suites for every level. Onboard the Magellan Explorer you can enjoy a full gym, sauna and top cuisine by our chef. All this is before we've even started talking about the experience itself which is incredible on it own.

Booking earlier protects you from price changes, lets you choose your favorite cabin and category and assures your spot.

**Q - Is this trip only for Photographers?**

A - Of course not. While we do have emphasize on photography with guidance and being at the right place on the right time, our team of experts is hugely knowledgeable on anything Antarctic. We have about 50-50 ratio between photographers and non-photographers.

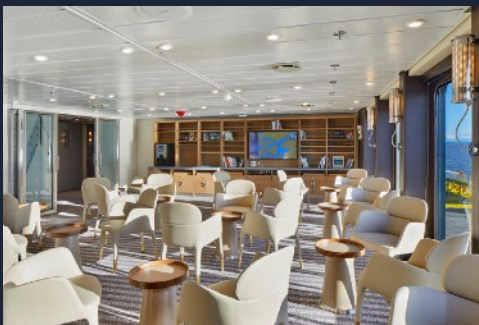
**Q - How far in advance should I book?**

A - Although it might seem like we have a lot of time, we're actually in a rush since bookings for Antarctica are made way in advance.

## Around The Ship



The Bridge



Library



Lounge

## The Dining



Our Restaurant



Our Excellent Dinner with Variety of Dishes



Wonderful Cuisine

## The Amenities



Sauna



Gym



Our Team at Your Service

## OUR TEAM IS ALL SET AND EXCITED TO MAKE YOUR DREAMS COME TRUE!



Explorer's Elite was founded by the people with the most direct access to the best stories in the world - Award winning Photographers, guides and Explorers.

Our experience and expertise, along side with unique approach and excellent connections have led us to create the Explorer's Elite Club - where we take our top VIP clients to the Adventures of a lifetime in the most luxurious conditions and experience.

Explorer's Elite is based in New York City.



PhotoTeva is a top tier player in photography, adventure expeditions and workshops, with around 1,000 travelers per year, Phototeva is one of the largest companies in the world in its field.

All our field leaders are professional photographers and experienced guides, with outstanding knowledge and love for nature and people.

We work together with local suppliers in the highest standard, with special emphasis on eco-friendly suppliers.

Phototeva is based in Tel-Aviv



Polar Wonder is a leading travel company specializing in immersive expeditions and adventures in the polar regions, including the Arctic and Antarctic. Based in New York, Polar Wonder offers a range of unique experiences tailored to explorers, nature enthusiasts, and photographers who seek to discover the untouched beauty of the poles. With a focus on small group sizes and sustainable practices, the company ensures that each journey is both intimate and eco-conscious. All of Polar Wonder's expeditions are led by expert guides and seasoned polar specialists with a deep understanding of the fragile ecosystems and wildlife of these remote environments. Partnering with top-tier, environmentally responsible local operators, Polar Wonder delivers high-quality, impactful travel experiences that foster a greater appreciation for the planet's most pristine and awe-inspiring regions.



Paseos Polares fusiona aventura y lujo en expediciones únicas, impulsados por la pasión por la naturaleza y la conservación del planeta. Fundados por fotógrafos renombrados, ofrecemos viajes excepcionales a destinos antes inaccesibles, con todas las comodidades de lujo.

Durante más de una década, hemos abierto caminos a lo desconocido, brindando experiencias inolvidables sin perder la esencia aventurera.

Paseos Polares está ubicado en la Ciudad de México, el corazón de nuestras operaciones.



Together we are proud to create and lead the best expeditions out there!



.....  
**YOUR NEXT ADVENTURE STARTS NOW!**  
.....

info@phototeva.com

