

explorer's elite

GREENLAND SOLAR ECLIPSE 2026

ONCE IN A LIFETIME OPPORTUNITY!

15 Days / 14 Nights Cruise

The solar eclipse of a lifetime

11 guests only Sailboat



PHOTOTEVA EXPEDITIONS

August 5-19 2026



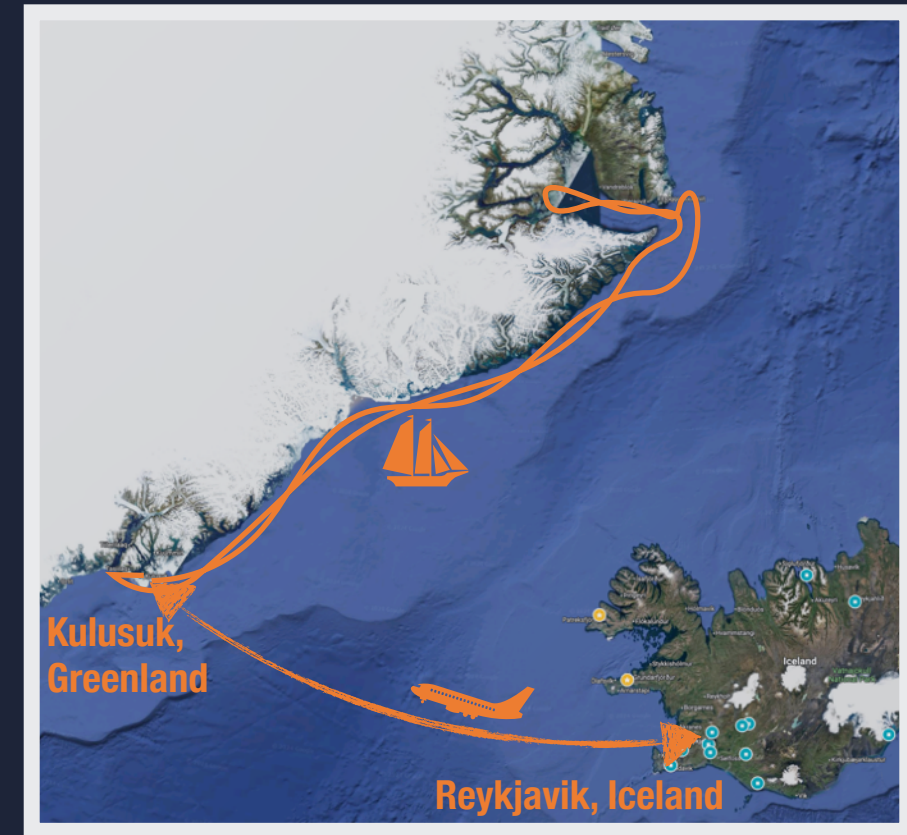
*All images in this document were taken during our previous Svalbard expeditions

WHAT IS SPECIAL ABOUT OUR EXPEDITION?

This is an expedition like no other - 15 days in Greenland's epic fjords and the peak of the trip the total solar eclipse of 2026! All on our sailboat of only 11 guests - Truly the ultimate bucket-list expedition!

What is so special about this expedition?

- ✓ **Polar Bears** - experience with the mighty white kings and queens of the Arctic.
 - ✓ **Huge Glaciers** - Witness the effects of climate change first hand with ice mountains
 - ✓ **Greenland's Geothermal Valley** - warm water ponds and blooming flowerbeds
 - ✓ **History and Legacy** - Learn a lot about the great explorers and the inuits of Greenland
 - ✓ **Visit Ittoqqortoormiit** - No, the cat didn't jump on our keyboard, this is a local village of the first nations of Greenland
 - ✓ **Greenland Wildlife** - Musk Ox, Arctic Hare and many more marine life.
 - ✓ Visit the world's largest nature reserve in northern Greenland with it's beautiful secrets
 - ✓ **Greenland's Scorsbysund** - the largest fjord in the world! This is where we'll experience the total solar eclipse
 - ✓ Fly in and out of Greenland to avoid the rough sea of the Denmark Straits - included
-
- ✓ **Solar Eclipse** - this is the main feature above all the others! We plan on being at the best place to enjoy majestic views with the eclipse.



GREENLAND FACTS

The largest island in the world sprawls from the same latitude as Oslo and comes closest in the world to the actual North Pole itself. Everything here is extreme, from the ice caps and climate to the wildlife. Welcome to Greenland!

Greenland, also known as Kalaallit in the native language, has been inhabited by humans for over 4,500 years, primarily by the Inuit people who migrated from northern Canada. The Inuit heritage still thrives impressively in the isolated settlements. Erik the Red was the first European to settle Greenland in the year 986 AD, giving it its Western name.

The second-largest ice cap in the world covers Greenland, imparting its distinctive white character, with 80% of the island's surface covered by it. This ice cap is responsible for massive glaciers, resembling buildings, flowing into deep fjords.

With only 56,000 residents on an area a hundred times larger than Israel, Greenland is the least densely populated territory in the world, excluding Antarctica.

Everything is unique here, especially when visiting the northernmost region in the world - it's the closest experience for us to explore another world.

Cool Facts about Greenland

- Latitude - Between 83° and 55° North
- Size - Approximately 2,160,000 square kilometers
- Human Population - 56,000
- Polar Bear Population - Approximately 2,500
- Capital City - Nuuk
- Temperature During the Visit - 10+ degrees Celsius
- Autonomous with Extensive Rights under Denmark
- Highest Mountain - Gunnbjørn (3,694 meters)
- 88% of Greenland's Population is Inuit
- No roads connect the settlements
- The words "kayak" and "igloo" originate from the Greenlandic language
- The largest nature reserve in the world is in eastern Greenland
- It is officially located on the North American continent
- The local currency is the Danish Krone



WHAT WILDLIFE SHOULD WE EXPECT?

Polar Bear (*Ursus Maritimus*)

World's largest land predator as males reach 1500 pounds and female around 700 pounds. Polar Bears rely on Sea Ice to hunt and survive, and without it they face certain extinction. We will be extremely privileged to see the bears from our boat and if possible we'll lower the Zodiaks and get as close as possible. Greenland is considered as an amazing place to see them, but of course, we can't promise anything.



Arctic Fox (*Vulpes lagopus*)

This small predator is a true survivor in the harsh conditions of Svalbard. Without the body fat its bigger competitors possess, it has the most insulating fur in the animal kingdom and must eat constantly to survive. We will land on one of our favorite beaches where the Arctic Foxes have their lair beneath a gigantic bird cliff, where mother fox has plenty of opportunities to feed her young pups.



Musk Ox (*Ovibos moschatus*)

witness the majestic Musk Ox in its natural habitat. These formidable herbivores, equipped with distinctive curved horns, epitomize resilience against harsh climates. Engage in a unique wildlife experience as you observe their social dynamics and witness the Musk Ox's enduring presence in this Arctic realm. Discover the incredible adaptability and strength that define these iconic creatures, making them a symbol of the untamed beauty of Greenland.



Arctic Hare (*Lepus arcticus*)

a resilient inhabitant of Greenland's icy expanses. With a coat that shifts hues with the seasons, these creatures effortlessly navigate snow-covered terrain. They weigh up to 7 Kg and usually live in groups. Marvel at their adaptability and witness the Arctic Hare's graceful existence in the challenging Arctic environment, a testament to nature's extraordinary resilience.

FULL ITINERARY



Day 1 - August 5 2026

Our journey begins in Reykjavik, the capital of Iceland. Here you can enjoy the city. Actually we do recommend even sleeping the night before in the city to have some time and look around.

In the afternoon, our flight is scheduled at 17:30 leaving from Keflavik airport (KEF), less than 2 hour flight and we're landing at 18:15 in Kulusuk (KUS) airport. Here we will board our sailboat. Already we will go through safety briefings and start sailing northwards.

Day 2-5 - August 6-9

We will cover great distances over night, and during the day we will visit several of the amazing fjords around. We will visit Kangertittivatsiaq, which stretches deep inland, flanked by towering cliffs and rugged mountains. The fjord is fed by massive glaciers that flow from the Greenland Ice Sheet, creating a dramatic landscape filled with drifting icebergs of various shapes and sizes. Its remote and wild setting makes it a haven for Arctic wildlife, including polar bears, seals, and seabirds. The pristine beauty and untouched wilderness of

Kangertittivatsiaq offer a unique and breathtaking glimpse into the raw Arctic environment.

We'll visit Nansen Fjord Named after the famous Arctic explorer Fridtjof Nansen, this fjord is remote and less accessible, with stunning glacial views and relatively calm waters. It provides a peaceful sailing experience amidst towering cliffs and Arctic silence.

As we get closer to our destination, we'll visit and hike in Rømer Fjord with its geothermal activity and flowerbed. What makes Rømer Fjord particularly unique is its sense of isolation and tranquility, providing a raw, immersive experience of Greenland's natural beauty. The area around the fjord is also rich in Arctic wildlife, such as seals, seabirds, and occasionally polar bears, making it a perfect spot for photographers and nature enthusiasts seeking a remote and authentic Arctic adventure.

Day 6-7 - Aug 10-11 - Scoresbysund

Early morning brings us to Scoresbysund, the world's largest fjord system, surrounded by colossal icebergs. Cruise

among these natural wonders, and in the afternoon, reach the Red Island, a stunning contrast of red stone arches against white ice and blue oceans. Visit Vikingbug and Bear Island. We will visit one of the most impressive fjords in the world: Ø Fjord is almost 40 nautical miles long (74 km, 46 miles), with mountains on each side up to 2,000 meters high (6,562 feet), and icebergs that drift over depths of more than 1,000 meters (3,281 feet). Your aim is to find shelter in Jyttehavn, on the Bjørneøer (Bear Islands). Explore the island's unique landscapes or search for Musk Oxen roaming the tundra.



FULL ITINERARY

Day 8 - Aug 12 - Solar Eclipse Time!

Photographing a total solar eclipse in Greenland, with its majestic icebergs as a backdrop, is an extraordinary experience that blends the wonders of celestial phenomena with the breathtaking beauty of one of Earth's most remote landscapes. The combination of a rare astronomical event and Greenland's otherworldly scenery creates a unique opportunity for photographers to capture images that are both scientifically significant and artistically compelling.

As the eclipse begins, the landscape slowly darkens, and the icy blue of Greenland's icebergs contrasts sharply against the encroaching twilight. The Sun, partially covered by the Moon, casts an unusual light over the vast expanse of ice and snow. The colors around the horizon range from deep purples and blues to fiery oranges and reds, creating an otherworldly atmosphere that feels like a scene from another planet.

When totality is reached, the temperature drops noticeably, and the icy world of Greenland becomes almost silent, save for the occasional creaking of icebergs and distant calls of Arctic wildlife. At this moment, the Moon completely obscures the Sun, revealing the Sun's ethereal corona—a halo of wispy plasma stretching millions of kilometers into space. The stark white

light of the corona against the darkened sky and the towering icebergs below provides a surreal, almost spiritual experience.

Photographers have only a few precious minutes to capture this scene, making preparation essential. The challenge is to balance the technical demands of eclipse photography—managing exposure, focus, and composition—with the unpredictable Arctic environment. Icebergs can drift slowly in the water, providing dynamic elements that change the composition and add a sense of movement to the photos. Reflecting the corona and eclipse in the icy waters can create mirror-like images that amplify the celestial drama.

Photographing a total solar eclipse in Greenland requires careful planning to capture the alignment of ice, sea, and sky in harmony. The logistics of such an adventure are complex—traveling to remote parts of Greenland, navigating icy waters, and dealing with potentially unpredictable weather. However, the reward is a once-in-a-lifetime opportunity to photograph a cosmic event against one of the most dramatic and pristine environments on Earth. The resulting images will not only document a rare natural occurrence but will also tell a powerful story of our planet's fragile beauty.



Time Table of the Eclipse in our planned viewing destination in eastern Greenland



Gåsepynt
Greenland,
Greenland



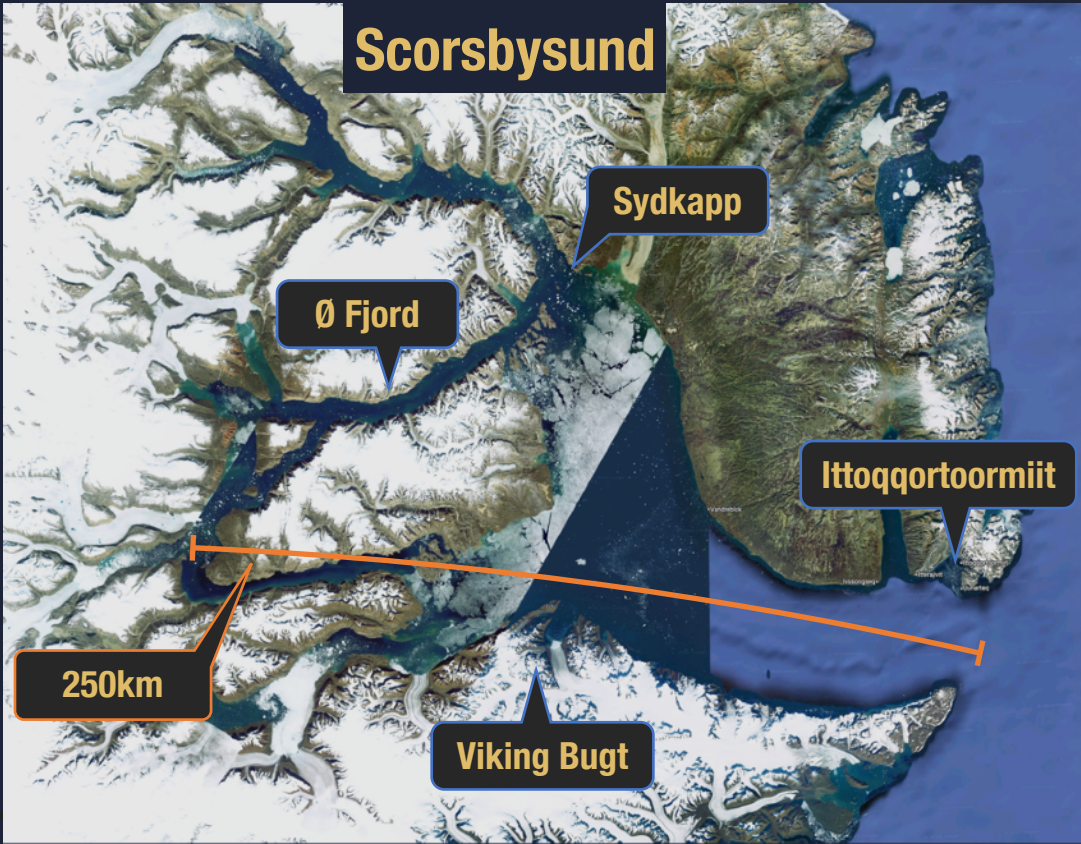
Total solar eclipse
(100.00%)

Obscuration	100.00%
Magnitude	1.0158
Duration	2h, 53s
Duration of totality	2m, 14s

Partial begins	Aug 12, 2026 at 15:34:47
Full begins	Aug 12, 2026 at 16:35:07
Maximum	Aug 12, 2026 at 16:36:14
Full ends	Aug 12, 2026 at 16:37:21
Partial ends	Aug 12, 2026 at 17:35:40

Times shown in local time (WGST)

FULL ITINERARY



Day 9 - August 13 - Scoresbysund

Wake up in the narrow fjord of Alpe, passing through mountain peaks at an elevation of 2200 meters with numerous glaciers. The edge of the Specter Glacier almost blocks the Alpe Fjord, leaving only openings for Zodiacs and kayaks to explore its surface. We'll have the opportunity to approach the impressive glacier. After a morning expedition, we continue north to the unique area called Gat Point, characterized by red and yellow sandstone arches—a breathtaking sight!

Day 10 - Aug 14 - Ittoqqortoormiit

We'll explore the remote and unique settlement known as Ittoqqortoormiit, home to the Inuit community. Most still rely on hunting for their livelihoods. Wander through this distinctive town, located near the world's largest national park and adjacent to the largest, deepest, and most intricate fjord system globally. A stunning destination for culture and scenery enthusiasts alike. In the afternoon we will set sail out of Scoresbysund.

Day 11-12 - Aug 15-16 East Coast

We will sail south-west towards Kulusuk, on the way there we will make a stop in one of

the fjords we might have missed on the way north. During our way south, we will have time for lectures by Roie Galitz and we will have time to go through the images and make some progress in the editing of the we have taken during our exploration of Scoresbysund and the Total Solar Eclipse.



Note: Itineraries are subject to weather conditions and may be adjusted for the safety and enjoyment of travelers.

FULL ITINERARY



All of these images were taken by us on our 2023 Greenland expedition by Roie Galitz

Day 13 - Aug 17 - Explore Sermilik

Sermilik is the region's most ice-carrying fjord with huge icebergs the size of an entire city drifting off its glaciers. The fjord has four major outcrops of the main Greenland Ice Shelf. It is almost always littered with huge, bizarrely shaped icebergs. The main iceberg producers are the Helheimgletscher, Isgletscher, Midgardgletscher glaciers, which are located in the northern part of Sermilik Fjord. One can see the famous Greenland ice sheet and whales from the fjord. We'll head up Sermilik Fjord as far as the ice conditions will allow.

Day 14 - Aug 18 - Explore Tasiilaq

Angmagssalik, also called Tasiilaq — the largest settlement in East Greenland. The town is located in a picturesque fjord surrounded by high mountains whose slopes and peaks are covered with snow. Beautiful icebergs can be seen on the way to the settlement, as well as cachalots and humpback whales. The town has a population of no more than 2,000 people. Most of the locals are the Inuits, native Greenlanders. The traditional occupation for the Inuits is hunting (sea animals and bears) and fishing.

Day 15 - August 19 - Kulusuk

Kulusuk is home for just over 200 people. There are Danes and Inuits among them. Despite the small population there is a health centre, a church and a cemetery there. The name translates from Greenlandic as 'chest of the black guillemot', a polar bird that nests in the area. Here we will spend some time in a non-stop crossing to Kulusuk, where our voyage will come to an end. A visit to Kulusuk Museum will provide insights on the life of the Tunumi Inuit of the east coast of Greenland, inter-woven in a personal account of a local family.

Our flight back to Reykjavik Keflavik is scheduled for 18:30, and we will land at 20:00. Flight schedule might change with weather constraints.

From here you can start your way home, or enjoy the beautiful and fascinating island of Iceland

Note: Itineraries are subject to weather conditions and may be adjusted for the safety and enjoyment of travelers.

YOUR GUIDE AND EXPEDITION LEADER

ROIE GALITZ

An award-winning wildlife photographer, entrepreneur and educator.
Greenpeace Global Ambassador for Arctic and Antarctic.

For the past 18 years, Roie is exploring and documenting our planet's wildlife. His photographs get great exposure worldwide, millions of views and frequent appearances in the media (BBC, National Geographic and others). His images were presented in local and international exhibitions, featured in exclusive magazines and honored with many international awards over the years. His main attraction is the high Arctic and the Polar Bears.

As an environmental diplomat, and a Greenpeace Ambassador, Roie has given 3 TED talks, spoke at the United Nations HQ, NY Climate Week and conventions all over the world. He is also a board member and on the advisory board for several environmental NGOs and a member of the Explorers Club.

Roie is a Nikon Europe Ambassador as well as Gitzo, Sandisk Professional, Gitzo and Lowepro. You're welcome to see more of Roie's work here www.galitz.com

AMBASSADOR of
GREENPEACE

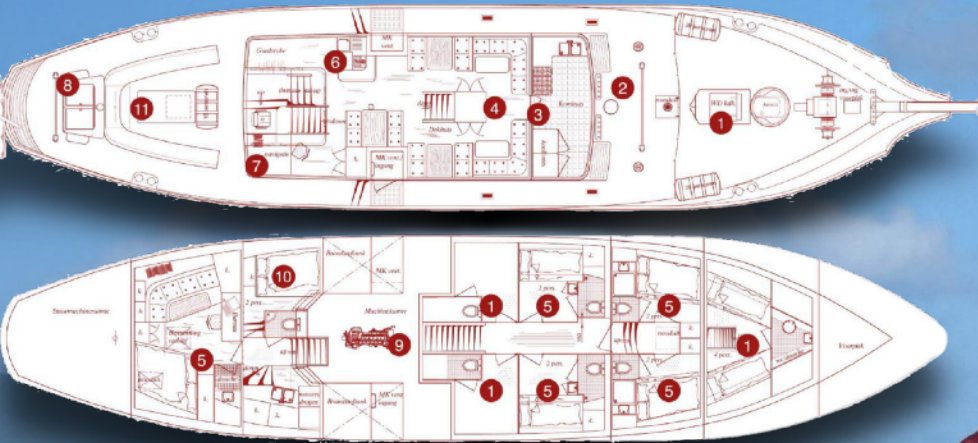


Featured on



OUR SHIP - ELDORADO

- ▶ Length - 38 Meters
- ▶ Width - 6.5 Meters
- ▶ Draught - 3 Meters
- ▶ Mast - 2 x 28 Meters
- ▶ Gross tonnage - 114 tons
- ▶ Built - 2007 in the Netherlands
- ▶ Cruising Speed - 8-12 knots
- ▶ Guests - 11
- ▶ Crew - 6 pax



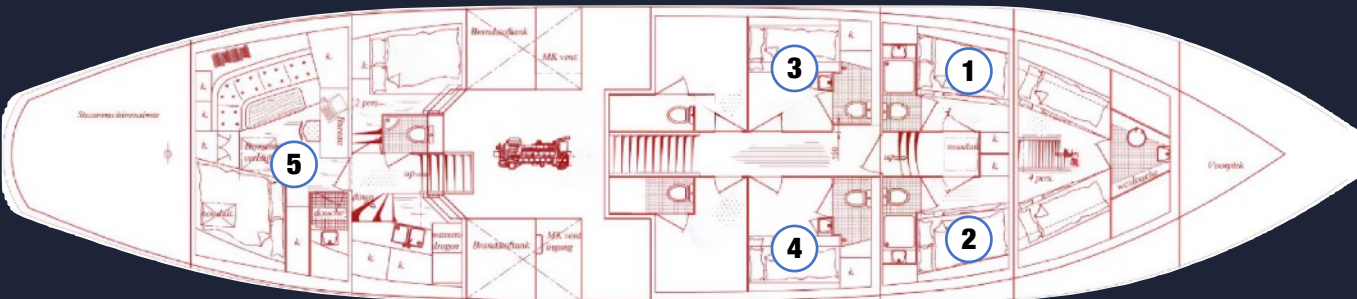
SOLAR ECLIPSE GREENLAND SAILBOAT EXPEDITION 2026

AUGUST 5-19 2026 - 15 DAYS, 14 NIGHTS

Pricing Per Person

Cabin Type	No.	Facilities	What's in the cabin?	Price
Double Deluxe	3 4	Private	2 Beds, Wardrobe, Toilet, Shower, Sink, Mirror, Locker, Hairdryer, power outlets, reading lamps, hangers.	\$19,495
Double	1 2	Private	2 Beds, Wardrobe, Toilet, Shower, Sink, Mirror, Locker, Hairdryer, power outlets, reading lamps, hangers.	\$18,895
Quad - Family Suite	5	Private	4 Beds, Wardrobe, Toilet, Shower, Sink, Mirror, Locker, Hairdryer, power outlets, reading lamps, hangers.	\$17,895

Cabin availability is very limited due to the small size of the boat



WHAT IS INCLUDED?

- * Round Flights Keflavik Iceland <-> Kulusuk, Greenland
- * In case of flight delay hotel accommodation
- * Sail and accommodation aboard the Eldorado - 11 guests only
- * Guide and Expedition Leader - Roie Galitz
- * Visiting local communities included
- * Educational program on board
- * Professional crew and ship's cook on board

WHAT IS NOT INCLUDED?

- ▶ International flights.
- ▶ Consumption of alcoholic and carbonated beverages.
- ▶ Telephone, internet and communication
- ▶ Travel insurance is a must.
- ▶ Tip for the crew
- ▶ Everything that is not specified in the "included" section.

Cabin Types



Double Standard

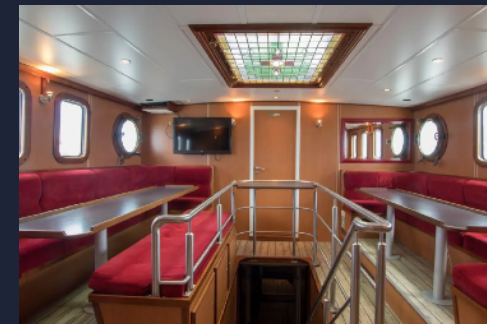


Family Suite - Quad Suite



Our Ship

Around our Ship



Dining room / lounge



Control room



Our Bar

OUR TEAM IS ALL SET AND EXCITED TO MAKE YOUR DREAMS COME TRUE!



Explorer's Elite was founded by the people with the most direct access to the best stories in the world - Award winning Photographers, guides and Explorers.

Our experience and expertise, along side with unique approach and excellent connections have led us to create the Explorer's Elite Club - where we take our top VIP clients to the Adventures of a lifetime in the most luxurious conditions and experience.

Explorer's Elite is based in New York City.

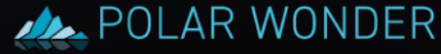


PhotoTeva is a top tier player in photography, adventure expeditions and workshops, with around 1,000 travelers per year, Phototeva is one of the largest companies in the world in its field.

All our field leaders are professional photographers and experienced guides, with outstanding knowledge and love for nature and people.

We work together with local suppliers in the highest standard, with special emphasis on eco-friendly suppliers.

Phototeva is based in Tel-Aviv



Polar Wonder is a leading travel company specializing in immersive expeditions and adventures in the polar regions, including the Arctic and Antarctic. Based in New York, Polar Wonder offers a range of unique experiences tailored to explorers, nature enthusiasts, and photographers who seek to discover the untouched beauty of the poles. With a focus on small group sizes and sustainable practices, the company ensures that each journey is both intimate and eco-conscious. All of Polar Wonder's expeditions are led by expert guides and seasoned polar specialists with a deep understanding of the fragile ecosystems and wildlife of these remote environments. Partnering with top-tier, environmentally responsible local operators, Polar Wonder delivers high-quality, impactful travel experiences that foster a greater appreciation for the planet's most pristine and awe-inspiring regions.



Paseos Polares fusiona aventura y lujo en expediciones únicas, impulsados por la pasión por la naturaleza y la conservación del planeta. Fundados por fotógrafos renombrados, ofrecemos viajes excepcionales a destinos antes inaccesibles, con todas las comodidades de lujo.

Durante más de una década, hemos abierto caminos a lo desconocido, brindando experiencias inolvidables sin perder la esencia aventurera.

Paseos Polares está ubicado en la Ciudad de México, el corazón de nuestras operaciones.



Together we are proud to create and lead the best expeditions out there!



YOUR NEXT ADVENTURE STARTS NOW!

info@phototeva.com

